



Suspended luminaire with up and down light. Light distribution 30% up 70% down.

Description:

Housing of extruded aluminium, endcaps of diecasted metal. White RAL 9016 fine structure as standard.

Louvre:

Microprismatic louvre lifted into the housing.

Mounting:

Suspended in the connected cable with supplied cablehook. (Preadjusted for 50 cm suspension) and wire mounted with hidden fitting. Wire is adjustable both length- and heightwise.

Connection:

Supplied with a halogen-free cable (2.2 m), earthed plug.

Control:

Provided with one pullswitch for dimming. Amplitudedimmable driver that also have integrated DALI.

Alternative models:

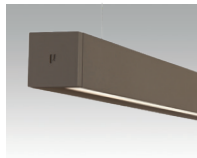
Sensors, lightcolours and lumen outputs. CRI >90
 Amber RAL 1035
 Black RAL 9005
 (Other colours on request)

Double pullswitch for separate control direct/indirect. Connecting cable 5-pole for DALI.

Lifespan L80 Ta25 100000h (B50)
 MacAdam 3 SDCM CRI: >80 | CE



Black



Amber



Adjustable wiresuspension

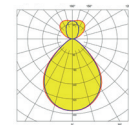


Hidden wirefitting



Cablehook

Accessory	Art no.	E-no.
Rails for T-profil 600mm	9 551 90	79 551 90
Hook for T-profil	9 551 92	79 551 92



Single luminaire

Type	Lumen	Art no.	E-no.	L	W	H	c/c	Power	Weight
MY 5000 830 MP TDC	4850	1 800 02	70 188 39	1500	72	72	1123 - 1303	45	4,5
MY 5000 840 MP TDC	5050	1 800 06	70 188 41	1500	72	72	1123 - 1303	45	4,5
MY 4200 830 MP TDC	4070	1 800 12	70 188 43	1190	72	72	817 - 917	38	4
MY 4200 840 MP TDC	4240	1 800 16	70 188 46	1190	72	72	817 - 917	38	4

Single luminaire with sensor

Type	Lumen	Art no.	E-no.	L	W	H	c/c	Power	Weight
MY 5000 830 MP TDC S	4850	1 800 52	70 188 49	1500	72	72	1123 - 1303	45	4,5
MY 5000 840 MP TDC S	5050	1 800 56	70 188 52	1500	72	72	1123 - 1303	45	4,5
MY 4200 830 MP TDC S	4070	1 800 62	70 188 83	1190	72	72	817 - 917	38	4
MY 4200 840 MP TDC S	4240	1 800 66	70 188 84	1190	72	72	817 - 917	38	4