

Industrial luminaire

Aluzink housing. Anodised aluminium reflector. Equipped with diffusionplate for reduced glare.

Tool-free connection by ends via dual glands. 3-phase 2.5mm<sup>2</sup> throughwiring as standard.

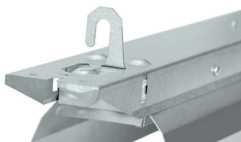
Mounted by wire, rails or flush to the ceiling. Integrated wirebracket which fold out from the housing.

Optionally with quick connection at ends 5-pole + 2-pole together with adapted cable or earthed plug for the next fixture (c/c measurements must be provided).

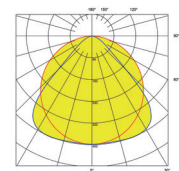
Dimmable version (TDC) with push-button, Dali and integrated corridor function.

Lifespan L80 Ta25 70000h (B50)  
MacAdams 3 SDCM CRI:>80

IP 23 | CE



Integrated wirebracket



Type	Lumen	Art no.	E no.	L	W	H	c/c	Power	Weight
Basic 23 LED 7000 M 830	6790	1 702 01	72 132 93	1360	116	100	1340	55	2,6
Basic 23 LED 7000 M 840	7070	1 702 02	72 132 94	1360	116	100	1340	55	2,6
Basic 23 LED 9000 M 830	9100	1 702 03	72 132 95	1640	116	100	1623	74	3,1
Basic 23 LED 9000 M 840	9480	1 702 04	72 132 96	1640	116	100	1623	74	3,1
Basic 23 LED 12000 M 830	11690	1 702 09	72 152 44	1640	116	100	1623	89	3,1
Basic 23 LED 12000 M 840	12170	1 702 10	72 152 45	1640	116	100	1623	89	3,1
Basic 23 LED 7000 M 830 TDC *	6790	1 702 05	72 132 97	1360	116	100	1340	55	2,6
Basic 23 LED 7000 M 840 TDC *	7070	1 702 06	72 132 98	1360	116	100	1340	55	2,6
Basic 23 LED 9000 M 830 TDC *	9100	1 702 07	72 132 99	1640	116	100	1623	74	3,1
Basic 23 LED 9000 M 840 TDC *	9480	1 702 08	72 133 06	1640	116	100	1623	74	3,1
Basic 23 LED 12000 M 830 TDC *	11690	1 702 11	72 152 46	1640	116	100	1623	89	3,1
Basic 23 LED 12000 M 840 TDC *	12170	1 702 12	72 152 47	1640	116	100	1623	89	3,1

\* Equipped with amplitudedimmable driver for DALI, push-button control and corridor function.